

CASE STUDY

-Regulatory Compliance Audit

www.qdegrees.com

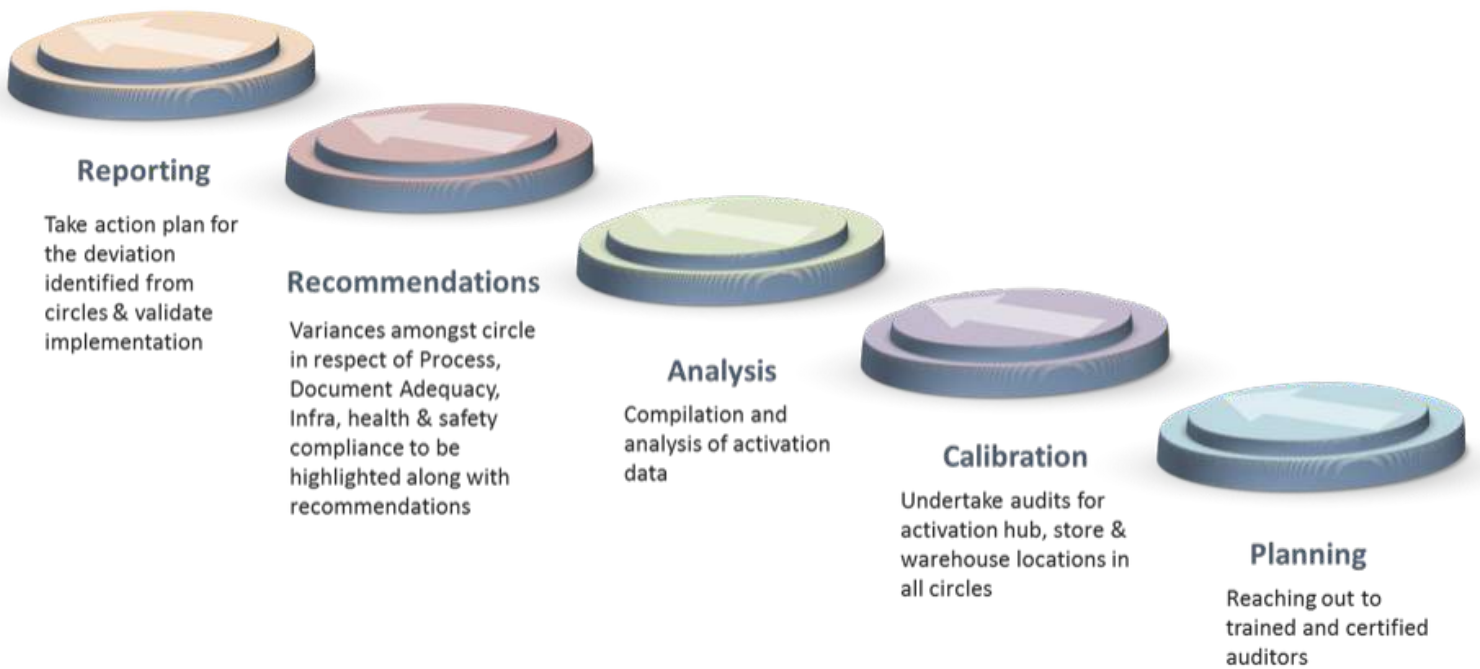
PROJECT OUTLINE:

One of our existing clients, a telecom major, wanted to achieve effective & continuous risk management and establish existence & use of adequate internal control systems for process management

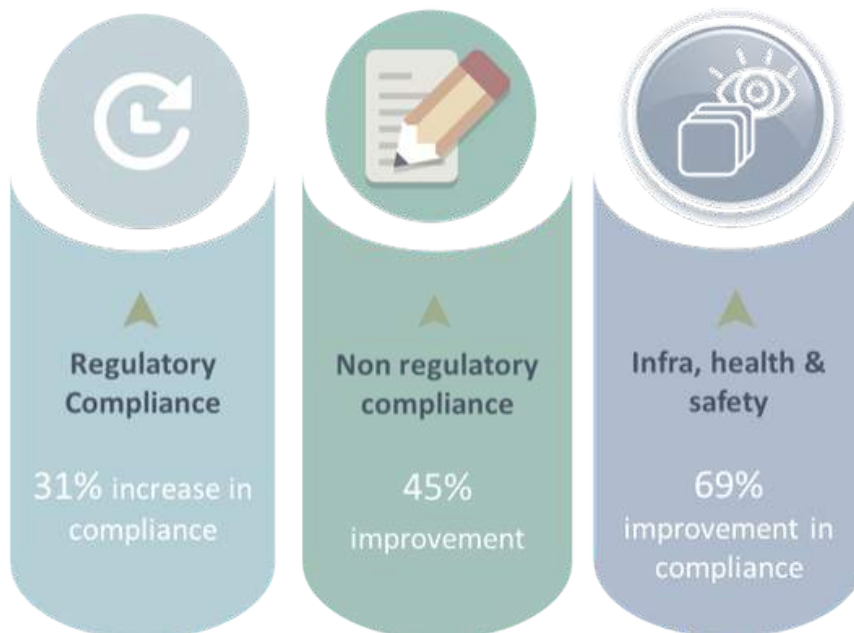
PROBLEM STATEMENT:

Proper functioning of few of their key process adherence at their various activation hubs, company stores and warehouse locations.

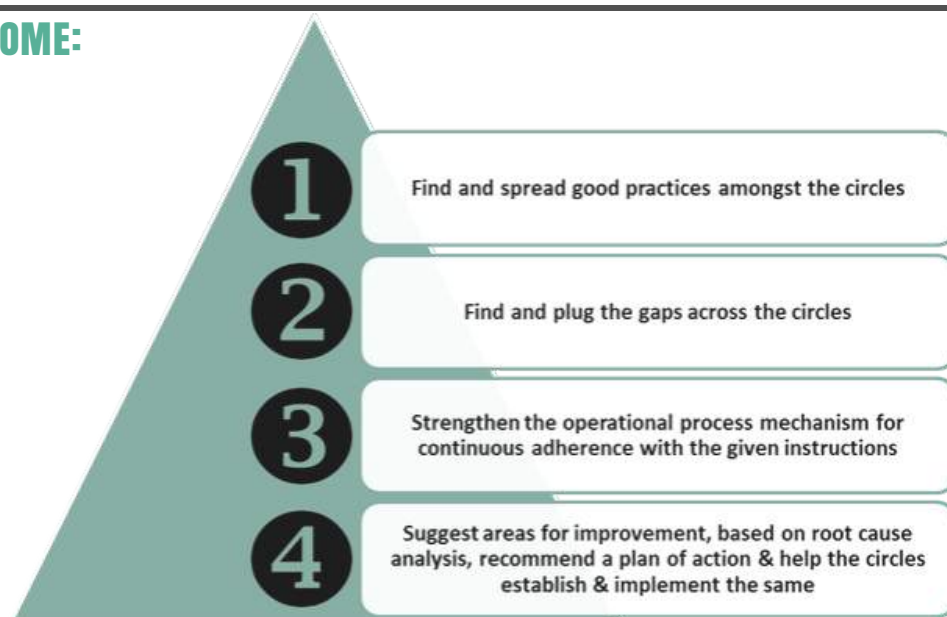
EVALUATION FRAMEWORK AND WORKFLOW:



COMPLIANCE LEVEL (TIME SPAN - 1 YEAR):



FINAL OUTCOME:



www.qdegrees.com